

Any Questions about Trash Pickup?

Please contact:

**City of Dover
Public Works Department
15 Lockerman Plaza
Dover, DE 19901
(302) 736-7025**

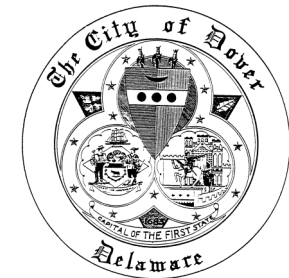
Sec. 90-15. – Rates and Billing Procedures.

- (a) **Rates.** The city council shall designate certain reasonable rates to be paid for the collection of refuse in certain areas, which rates shall be set each year at the time of establishing the annual budget, and which rates shall apply for that year and for the area designated by the council. The city manager shall bill residents in accordance with the rates established by the council and shall be in charge of collecting these charges. In case of delinquencies, Ordinance #2019-10 - Chpt. 90 - Solid Waste Page 12 delinquent amount shall become a lien in accordance with state law.
- (b) **Billing Procedures.** All in-city customers of residences, duplexes and apartment houses with active utility accounts must have sanitation services included in the list of active services for the account.

(Code 1981, § 8-16; Ord. of 3-13-1989)

Trash?

- . Where?**
- . When?**
- . What will the City Pick Up?**



City of Dover

Public Works

Where & When

Container placement for pickup on streets.

Trash should be placed out for pickup on collection day by 7:00 a.m. or the evening before, after 7:00 p.m. **ALL** household trash **MUST** be bagged and placed into the black container provided by the City. NO trash bags will be picked up that are outside the can. Place container 3 feet away from cars, fences, mailboxes, etc. After the container has been emptied, it must be moved back to its storage place (at the side or rear of the home) not later than 8:00 p.m. on the day of collection.

Container placement for pickup in alleys.

Containers authorized for alley pickup shall be placed at the property line along the edge of the alley, easement, or public way and shall be at the normal alley ground level. Place container 3 feet away from cars, fences, garages, etc.

Curbside Recycling

The City of Dover provides a curbside recycling container. Collection is every other week on the same day as the regular trash collection. Call Public Works at 736-7025 to schedule delivery of a container and a collection schedule. All billing associated with the service is paid for by the City of Dover. There is no charge to the resident.

What?

Permitted refuse in containers.

All household trash, papers, cans, and other normal household trash. All household trash **MUST** be bagged and placed into the black container provided by the city.

NO trash bags will be picked up that are outside the can.



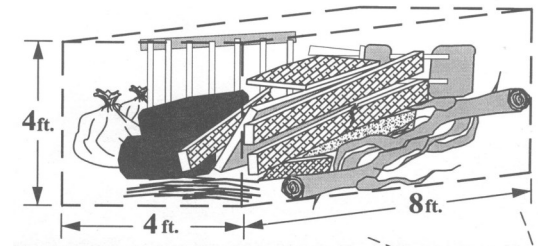
Yard Waste Material

ALL yard waste material must be placed in a privately owned 35 gallon or less plastic container. Yard Waste containers are picked up on the regular weekly collection schedule. Metal containers will not be allowed. There is no limit on the number of containers for yard waste. Grass clippings, leaves, shrubs, plants, weeds, small limbs, and sticks can be put in the yard waste container. Only loose yard waste material can be placed inside the containers. **NO** plastic or paper bags can be used.

What if I have Big Stuff?

Bulk yard waste

Bulk yard waste will be collected on the **SAME** day as **RECYCLING**. Residents are permitted to place at the curbside one bulk yard waste pile not to exceed 4' high 4' wide and 8' long. Large limbs must be cut into lengths less than 8'. Small loose limbs must be bundled using biodegradable twine. Amounts over a single pile of 4x4x8 will be picked up for an additional charge. **Please call 736-7025 for an estimate.**



Bulk Household Trash

Bulk household trash (furniture, large appliances, rugs, etc) will be collected on the week when recycling is **not** picked up. **Do not place bulk piles directly under power lines.**

Sorry, we cannot take:

- Tires
- Concrete or bricks
- Chemicals and other hazardous waste