

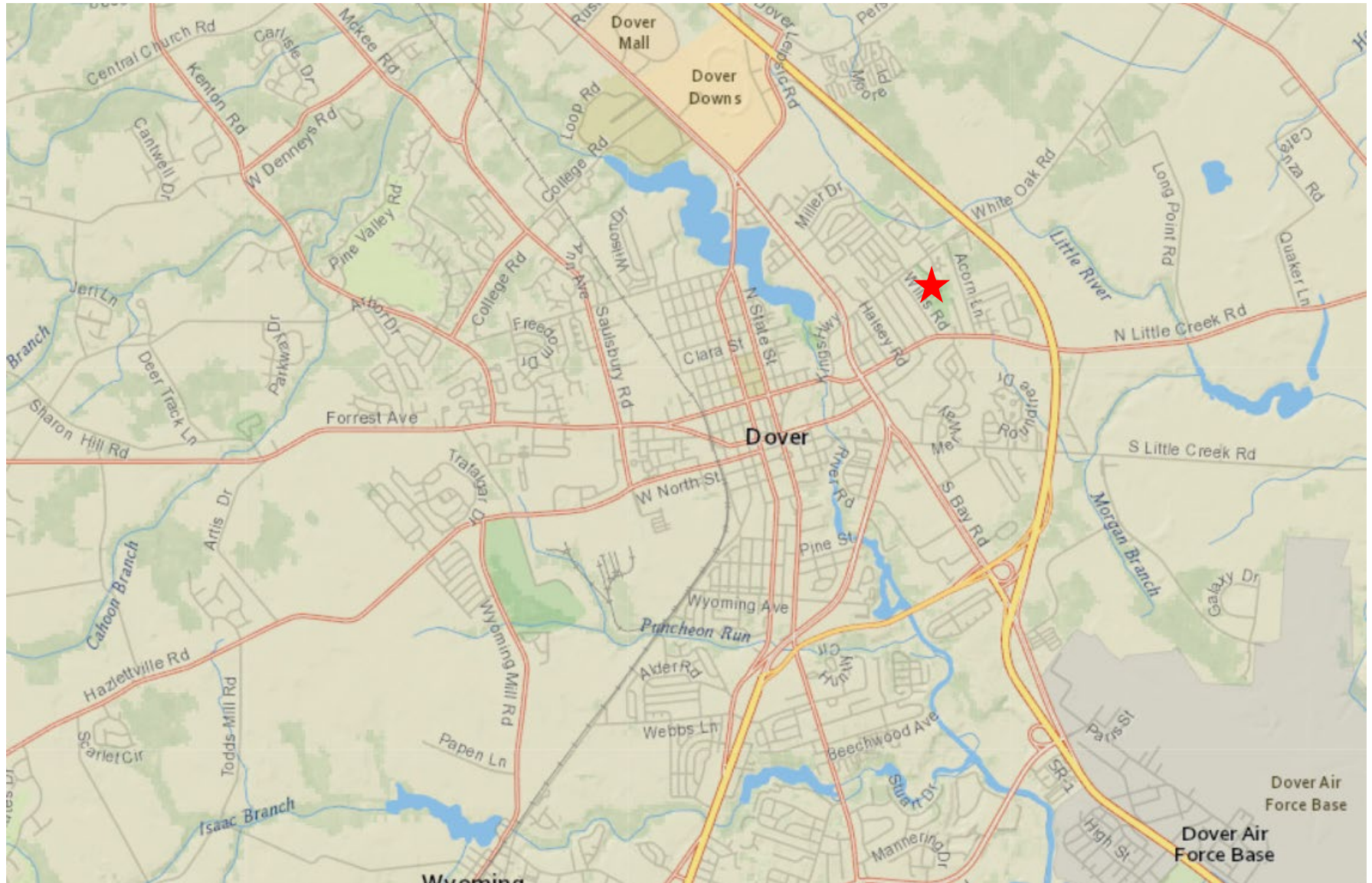
Dover Park Improvements Project



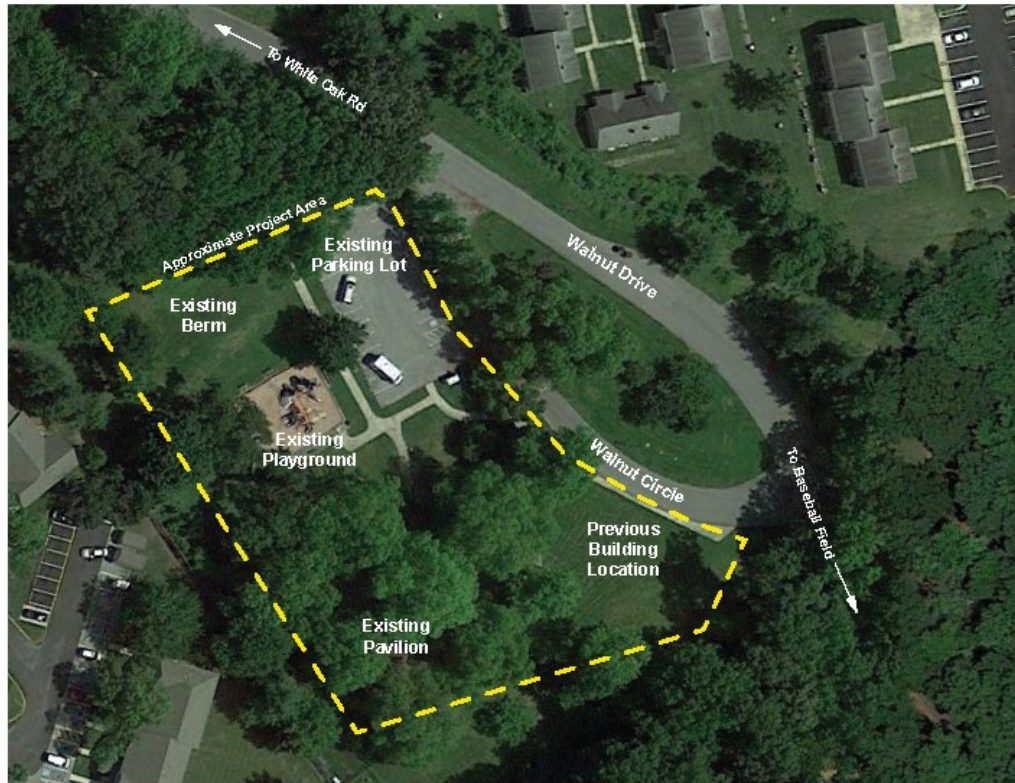
Virtual Meeting • December 17, 2020



Project Location



Project Overview



Aerial of Dover Park Project Area



Dover Park Master Plan

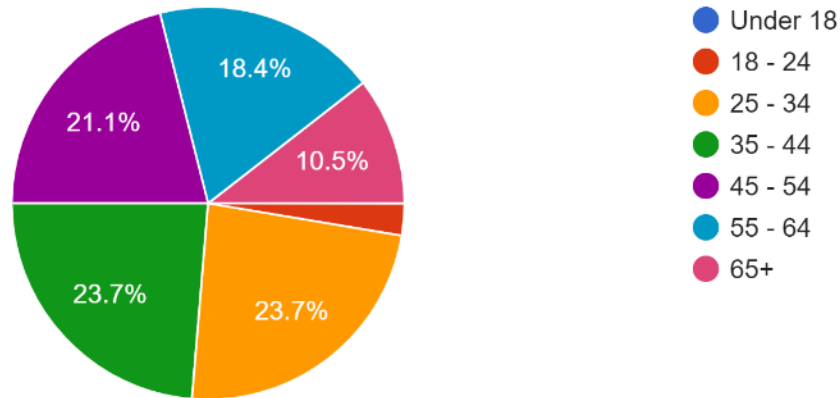
October Public Workshop

- Held on October 1
- Online Survey – 38 respondents
- Major survey findings:
 - 50% of respondents currently use Dover Park
 - Swings - most desired playground component
 - Ground sprayers - most desired spray pad component
 - Seating – most desired supporting amenity

Survey Results

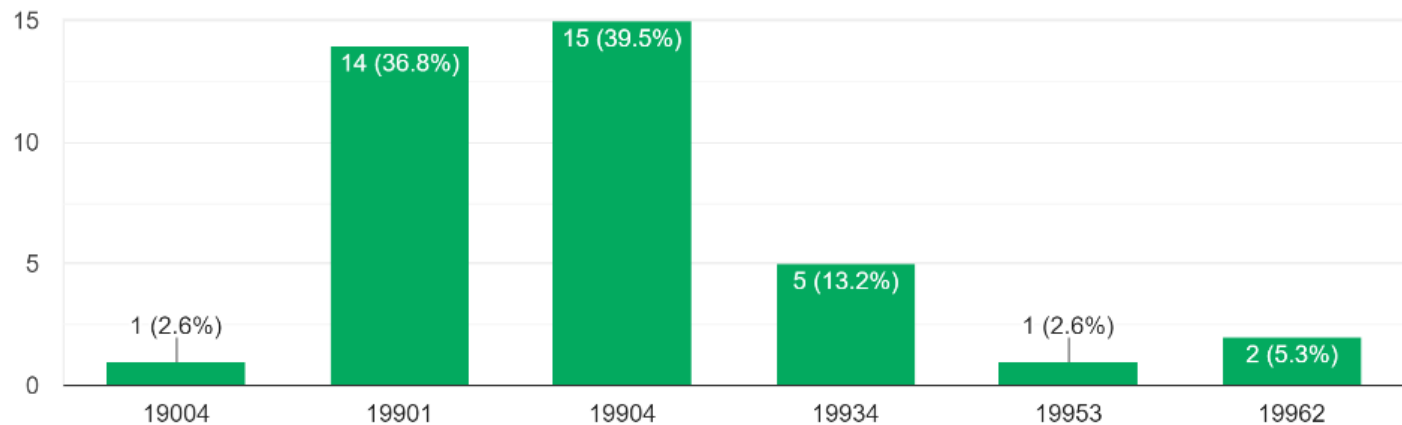
How old are you?

38 responses



What is your zip code?

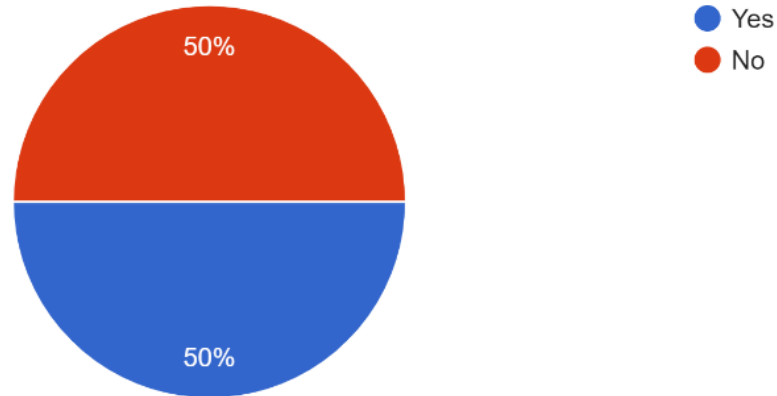
38 responses



Survey Results

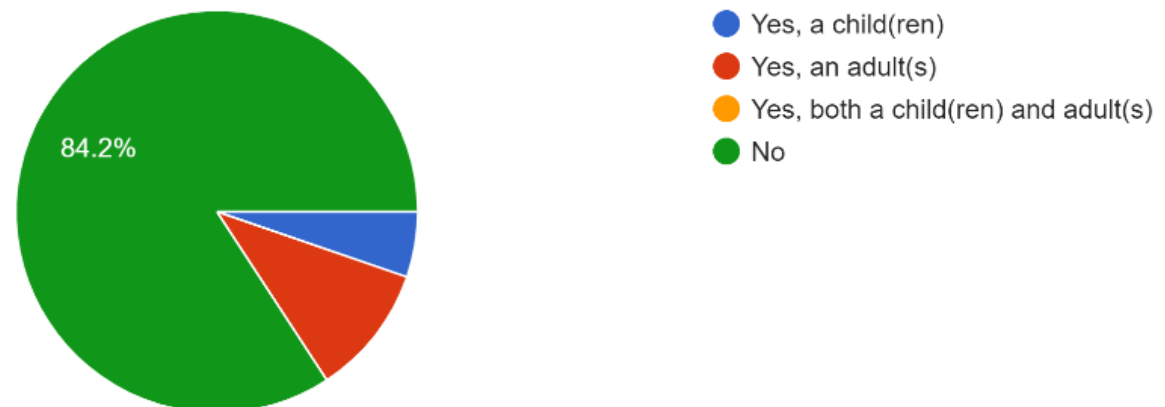
Do you or members of your household currently use Dover Park?

38 responses



Do you or anyone in your household live with a disability?

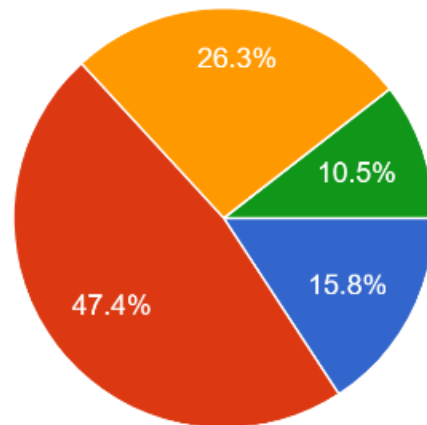
38 responses



Survey Results

What theme would you like for the spray pad?

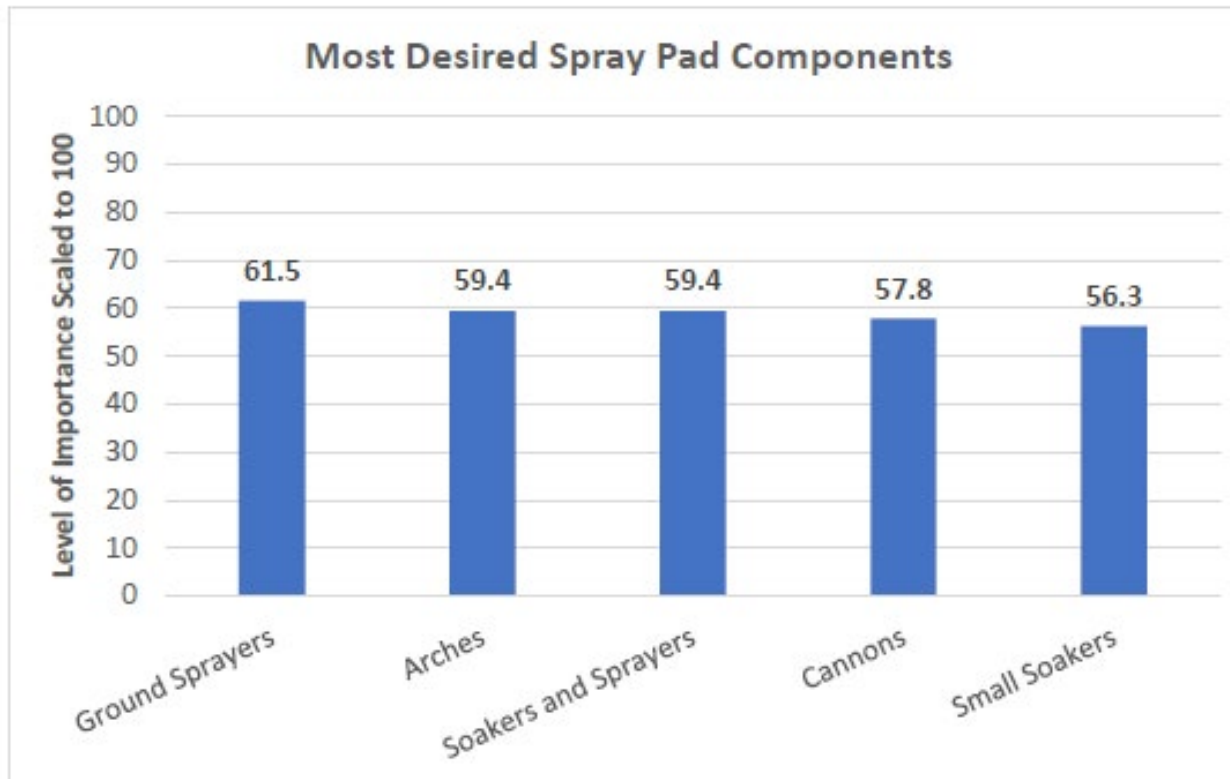
38 responses



- Nature (greens and browns with nature motifs)
- Playful (colorful and bright)
- Nautical (blues and greens with ocean motifs)
- Modern (grays and blues)

Survey Results

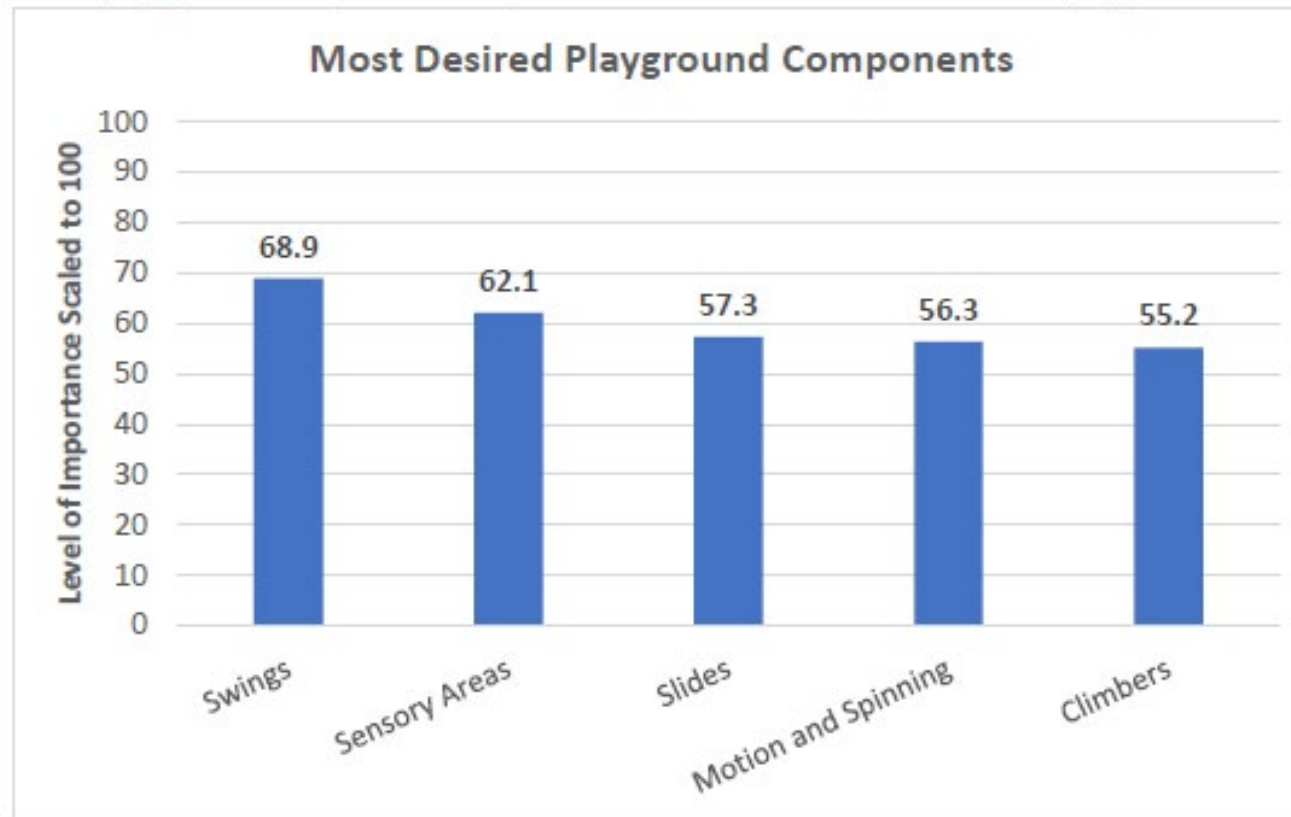
What water features do you desire the most for the spray pad?



Survey Results

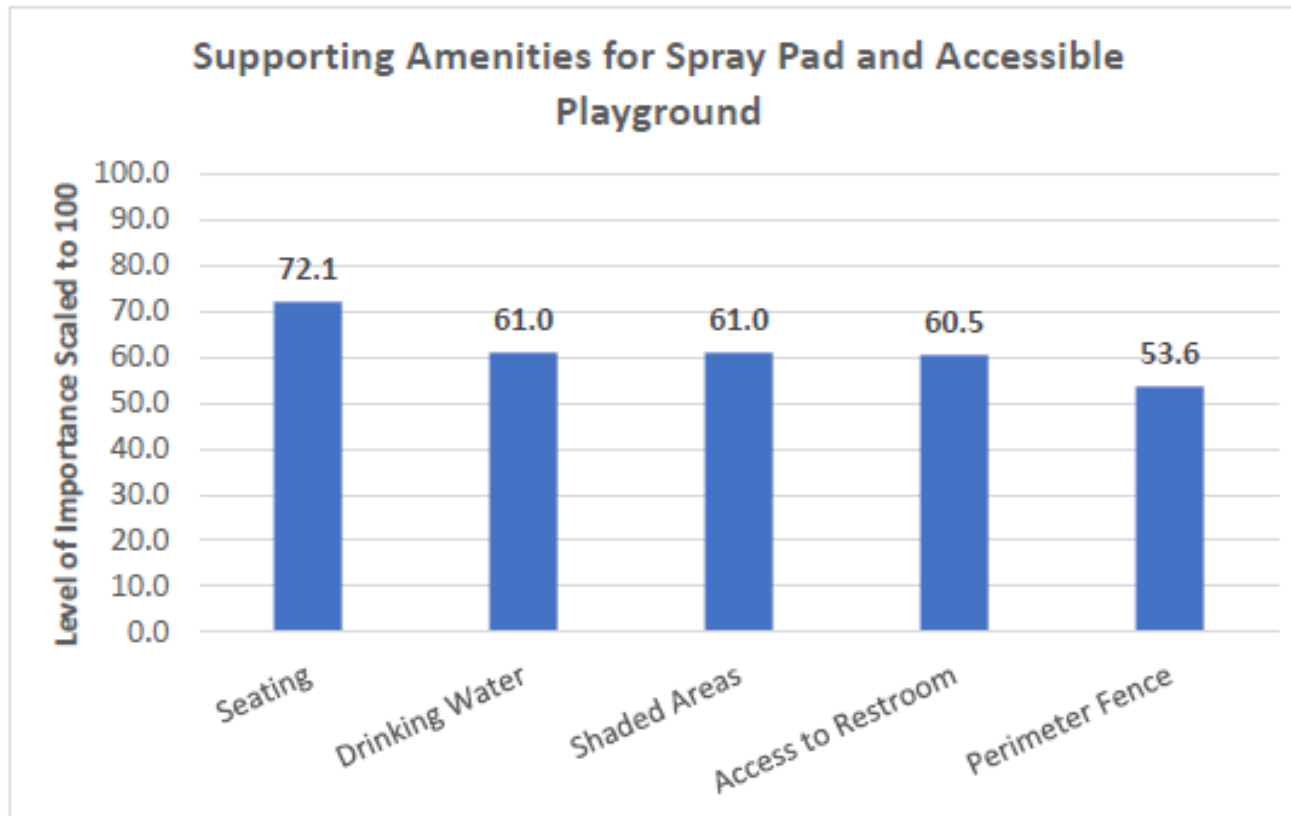
Accessible Playground

What playground **components** do you desire the most for the accessible playground?



Survey Results

What supporting amenities for the spray pad and accessible playground are most important for you?



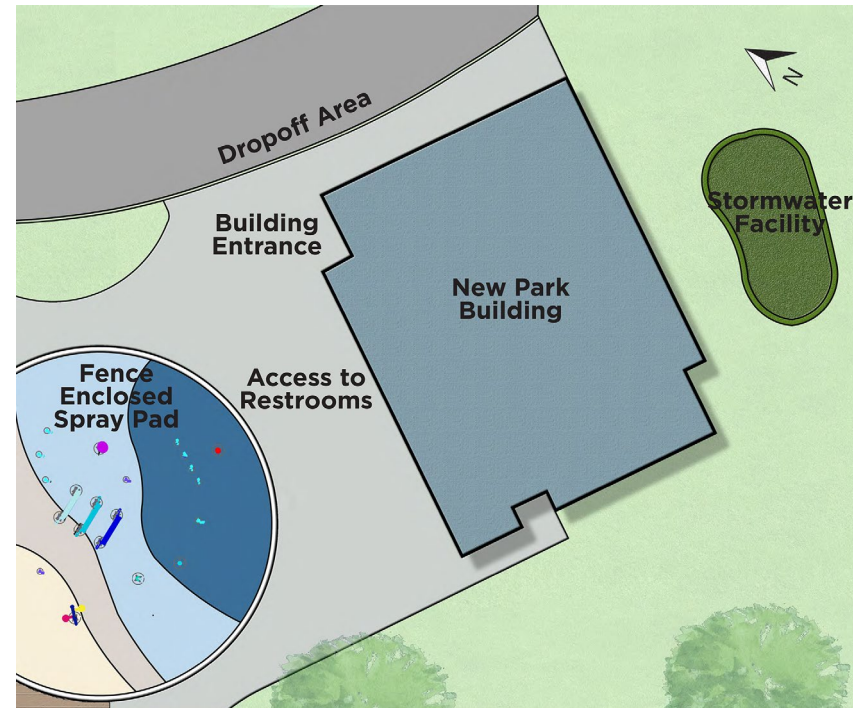
Overall Concept Plan



Park Building

Building Parameters

- Provide an open space multi-purpose room, restrooms, an office, storage room, mechanical room, and service pump room for the spray pad
- Estimated size is 3,000 square feet
- One story
- Located close to spray pad



Park Building

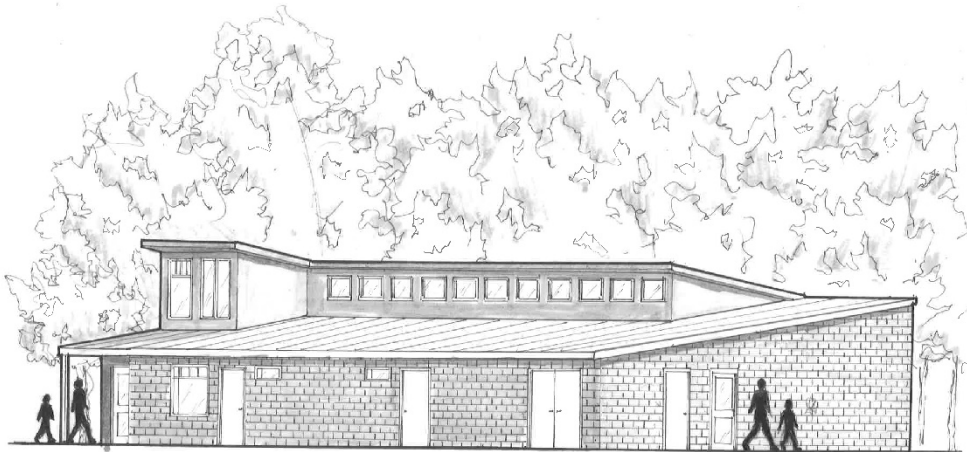
Building Programming

- Summer day camps
- Youth and adult education programs
- Arts and crafts classes
- Fitness and dance classes
- Senior social activities

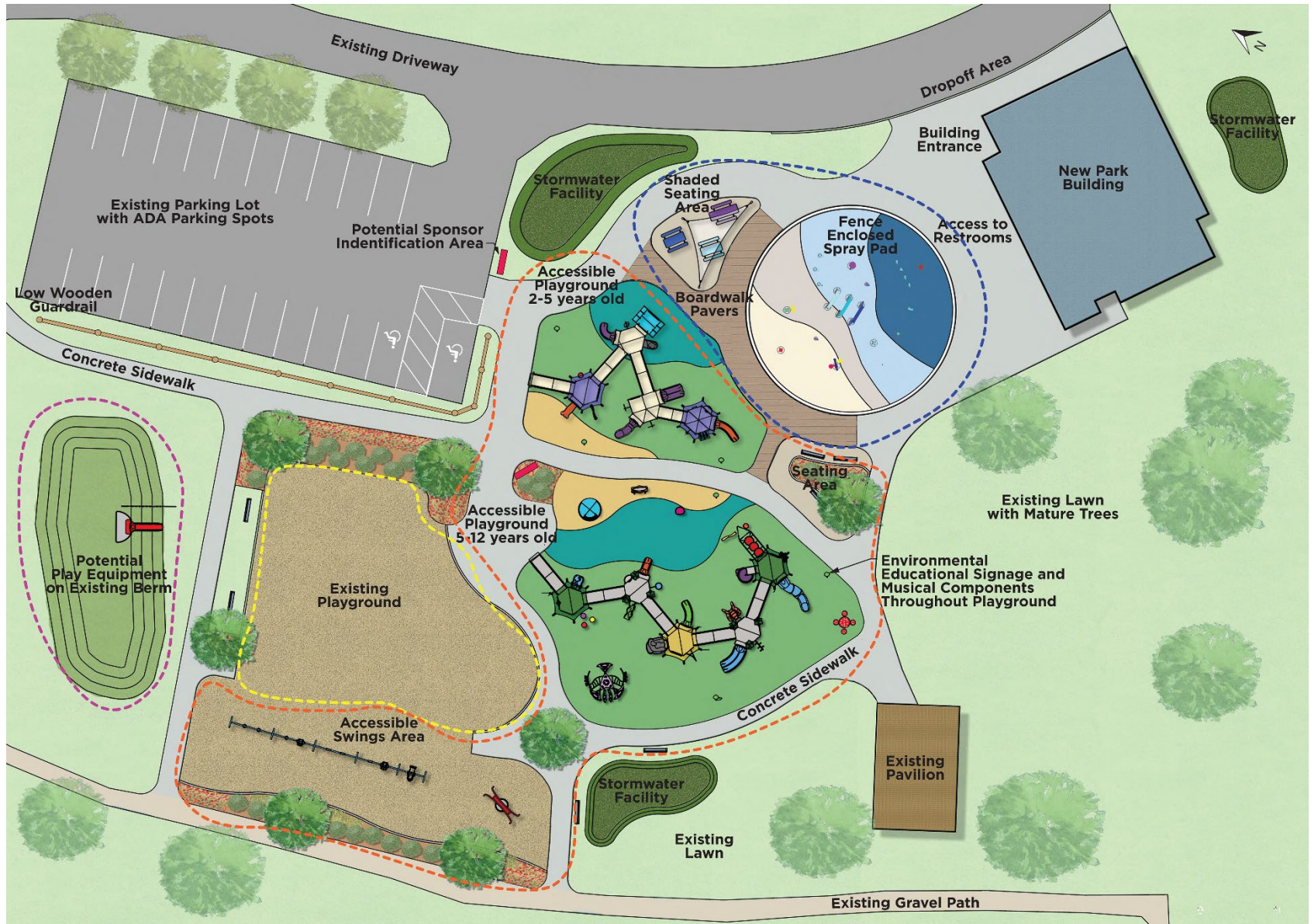


Park Building

- Sub-dividable multi-purpose room to accommodate up to 60 occupants
- Clerestory windows above multi-purpose room for natural light
- Office/Reception area with unobstructed views to main entry and spray pad



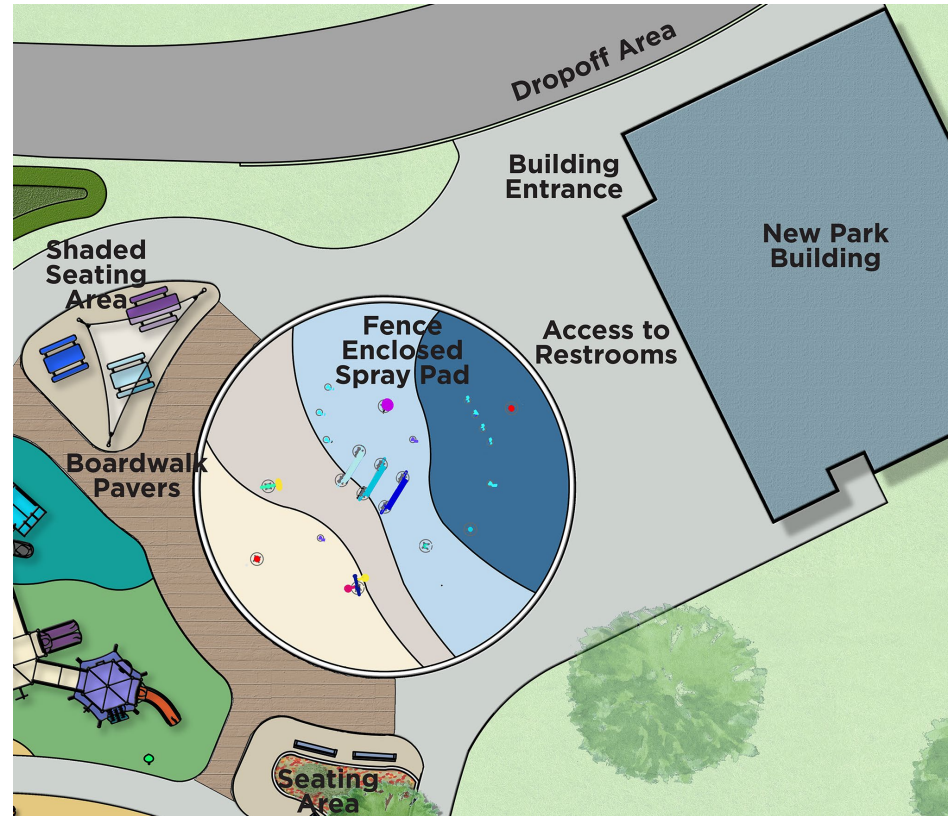
Spray Pad & Accessible Playground



Spray Pad

Spray Pad Parameters

- Locate close to building (pump room, office, restrooms)
- Approximately 2,000 square feet
- 8-10 spray components
- Accommodate 20-30 youth
- Must have 4' perimeter fence and gate(s)
- Provide area for younger and older youth
- Brushed concrete surface



Spray Pad



Spray Pad



Spray Pad



Accessible Playground

Accessible Playground Parameters

- ADA accessible
- Offer opportunities of all ages and abilities
- Keep existing playground; incorporate with new playground area
- Swings most desirable component from public survey and public meeting
- Provide connecting pathways and desirable amenities; seating most important to public
- Public desire for different surface/textures types



Accessible Playground



Dover Park

Design • Build • PLAY!



Accessible Playground



Dover Park 2-5 Unit

Design • Build • PLAY!



Accessible Playground

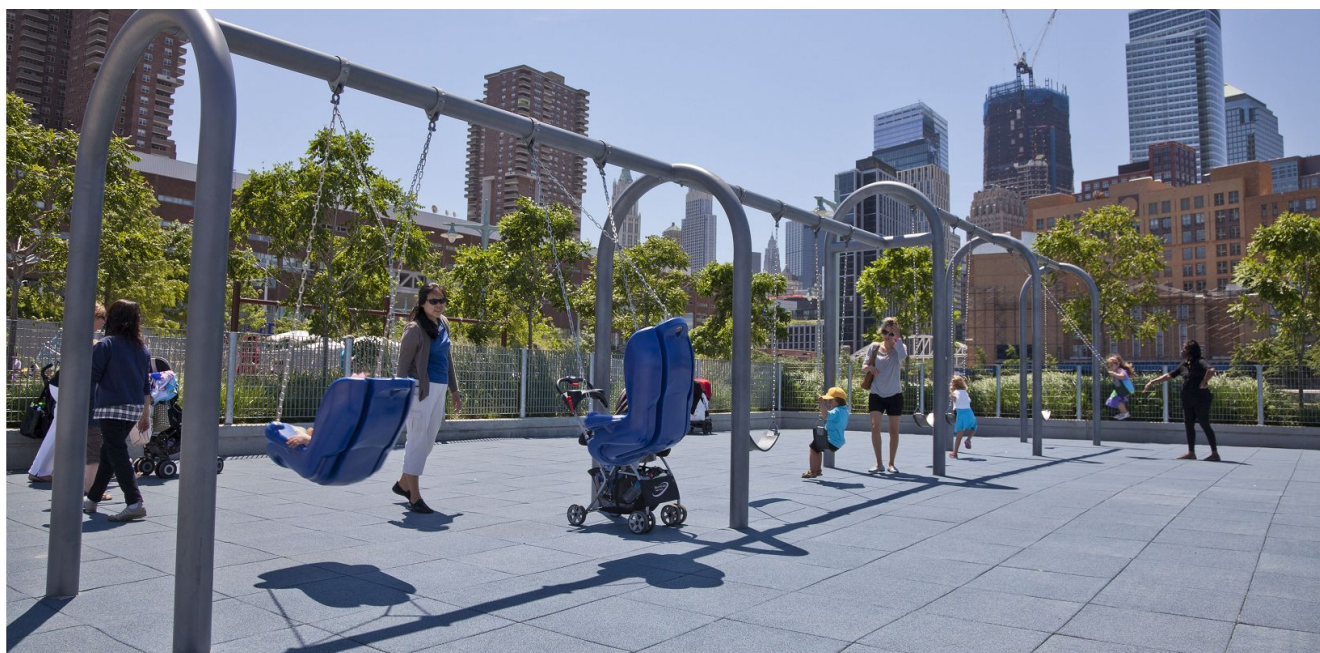


Dover Park 5-12 Full Site

Design • Build • PLAY!



Accessible Playground



Supporting Amenities

- Access to restrooms
- Benches
- Picnic tables
- Shade structures
- Bike rack
- Waste receptacles
- Sidewalks
- Landscaping

Project Schedule and Funding



Park Building

FUNDED

Spray Pad

FUNDED

Accessible Playground

CONSTRUCTION FUNDING NEEDED



Thank you!

Next Steps

Provide comments and follow our progress at:

www.cityofdover.com/Parks-Recs-Home

Questions or Concerns?

Contact Carolyn Courtney with City of Dover at

CCourtney@dover.de.us